

PLC HARDWARE



SIEMENS

N°2 CPU S7400
N°2 PROFIBUS DP NETWORK
N°1 ETHERNET NETWORK



SIEMENS

N° 990 DIGITAL INPUT
N° 189 DIGITAL OUTPUT
N° 131 ANALOG INPUT
N° 25 ANALOG OUTPUT

PLANT INSTRUMENTS



VAGON
DRIVEN BY DRIVES

N°15 DRIVE NXP



PEPPERL+FUCHS

N° 2 LB SYSTEM WITH DP
COMMUNICATION
N° 10 SMC PROFIBUS MANIFOLD

SYSTEM INTERFACES



N°2 SCADA REDUNDANT SERVER
N°3 SCADA CLIENT WITH
MULTIMONITOR SYSTEM

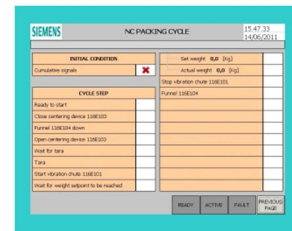
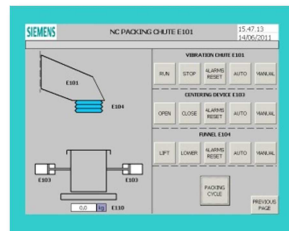
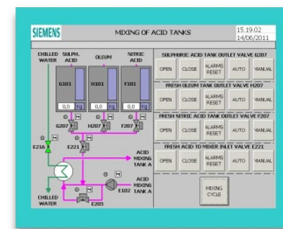
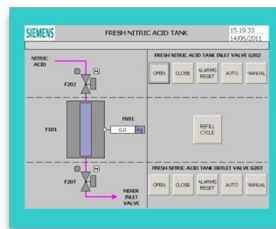
N°1 OPC SERVER



SIEMENS

N° 2 PANEL TOUCH SCREEN
DEVELOPED WITH WINCC FLEXIBLE
2008 SOFTWARE

OPERATOR PANEL SCREENS



SCADA MULTIMONITOR SCREENS

