

### PLC HARDWARE



N°1 CPU CX1020  
N°1 PROFIBUS DP NETWORK

BECKHOFF



N° 50 ANALOG/DIGITAL INPUT  
N° 20 ANALOG/DIGITAL OUTPUT

BECKHOFF



PEPPERL+FUCHS PROFIBUS  
REMOTE I/O

PEPPERL+FUCHS

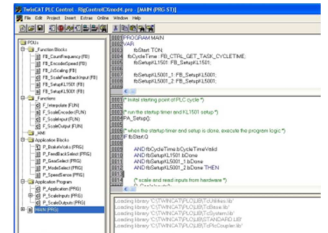
### PLANT INSTRUMENTS

### SYSTEM INTERFACES



N° 1 PANEL TOUCH SCREEN  
WITH BECKHOFF  
VISUALIZATION HMI SOFTWARE

BECKHOFF



### OPERATOR PANEL SCREENS

The operator panel screens include:

- PLANT MONITORING:** Displays real-time data for Aqueous Acetone, Steam, and Concentrate Acetone. Includes graphs and status indicators.
- ALARM LIST:** Lists active and pending alarms with details such as alarm ID, description, and severity.
- STOP/START:** Emergency control interface with large buttons for stopping and starting the process.
- EXPLOSIVE SEPARATION PLANT:** Detailed control interface for the separation process, including manual and automatic modes.